

梁伟

Liang Wei

有情况且

Circumstantial

## Liang Wei: Circumstantial

*Liang Wei's artistic practice is a response to the intensity of contemporary life, encompassing material, visual, and spiritual aspects. She translates this intensity of life and landscapes into densely layered lines, focusing not on specific images or materials but rather on the inner density of images themselves, the complex relationships between them, and the spillover of imagery.*

——Wang Minan

In a hyper-individualist society moulded by off-line and online realities, no one perspective holds sway. Instead, infinite takes on reality exist simultaneously, each one ready to change in an instant. Liang Wei's work excavates this sense of dislocation, creating worlds grown from this schizophrenic societal condition.

In Liang Wei's work, each painting creates its own macrocosm. Within each composition, images grow and mutate, form agglomerations and accumulations and evolve with an untethered lifeforce. However, Liang's paintings are not comprised of images. Whatever images were fed into her work have been utterly digested and assimilated by an inner process. What comes out of that process can be understood as psychological maps of reality. They are adaptations of mass images, mass data, like the world's DNA unspooled.

Accompanying Liang's large canvases are a series of small works on paper. Rather than forming complex worlds, they appear to be alternative lifeforms finding existence, and testing their place within it.



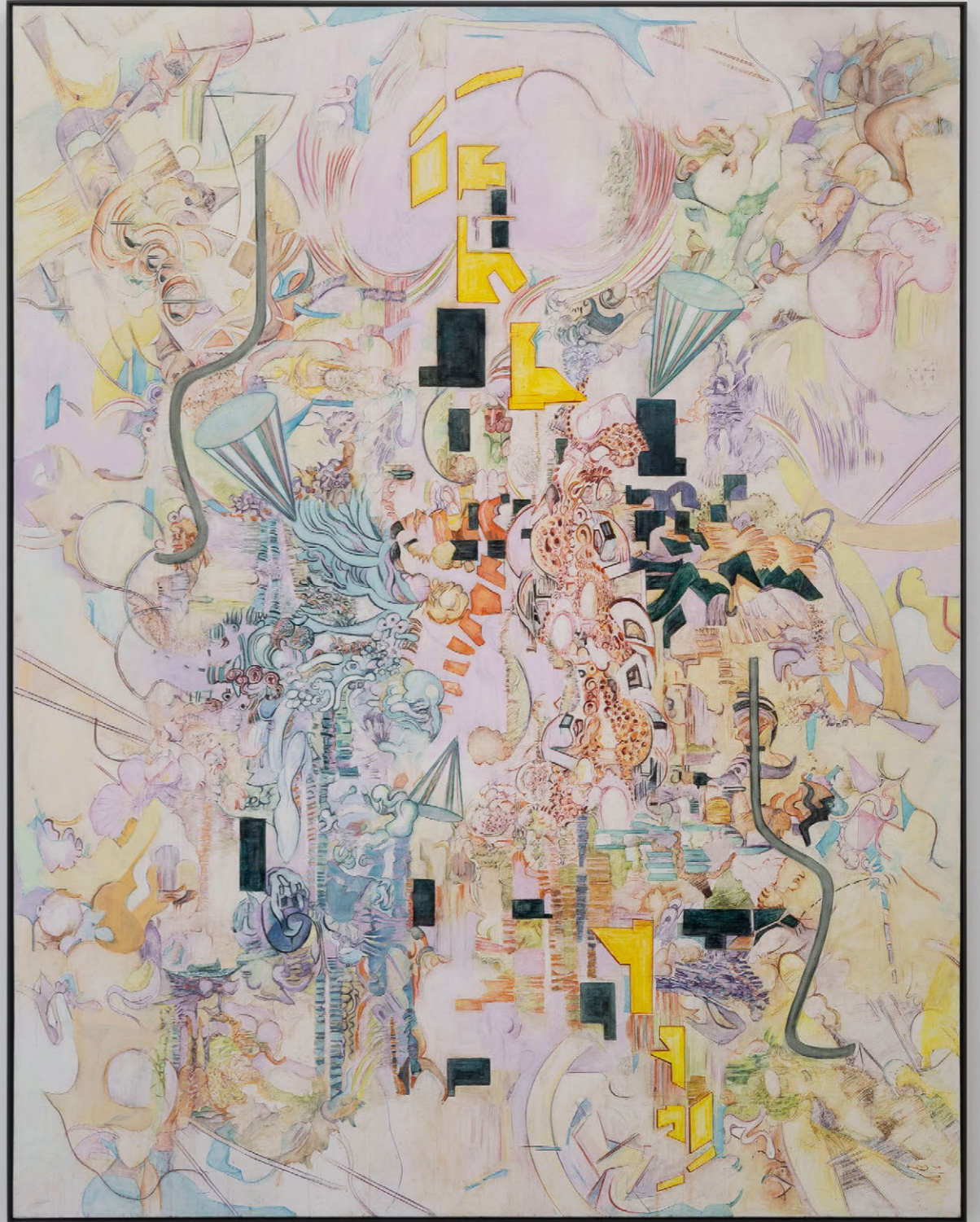
Exhibition View



Quiet Owing  
2020-2023  
Acrylic on canvas, ink brush  
40 x 50 cm



Exhibition View



Forgotten Move  
2024  
Acrylic on canvas, ink brush  
230 x 180 cm





Thing Without Nothing  
2024  
Acrylic on canvas, ink brush  
230 x 180 cm





Exhibition View



Circumstantial  
2020-2023  
Acrylic on canvas  
70 x 50 cm



Exhibition View



Once There was Also Twice  
2024  
Acrylic on canvas, ink brush, paint marker  
250 x 400 cm





An Omen Being Evaporated  
2022  
Acrylic on canvas, watercolor pencil, ink pencil  
200 x 300 cm



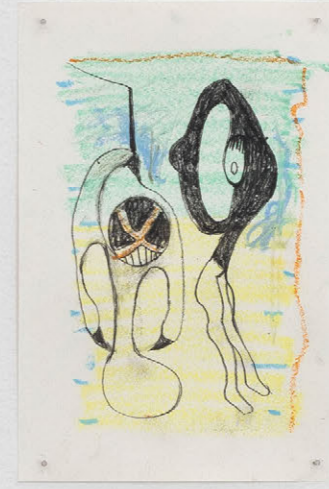


Exhibition View









# Liang Wei

Liang Wei is an artist based in Beijing. She graduated from L'Art Plastiques Universite Des Sciences Humanines De Strasbourg, France in 1999.

Her selected exhibitions include: Circumstantial, Magician Space, Beijing (2024); One, and the Same, Magician Space, Beijing (2021); Duration: Chinese Art in Transformation, Beijing Minsheng Art Museum, Beijing (2020); Folded Silence, Bernier/Eliades Gallery, Brussels, Belgian (2019); Out of Ink, Pera Museum, Istanbul (2019); Before Itself, Magician Space, Beijing (2018); .com/.cn, K11 Art Foundation, MoMA PS1, Hong Kong, Shanghai (2017); Vague Necessity, Magician Space, Beijing (2016); The Garden of Diversion, Sifang Art Museum, Nanjing (2013); Place of Residence with Artists from Brazil and China, ShanghART H Space, Shanghai (2012); Moving Image In China, Minsheng Art Museum, Shanghai (2011); City Net Asia 2007, Seoul Museum of Art, Seoul (2007); The 12th Kolkata Film Festival, India (2006); China Power Station, Battersea Power Station, London (2005).

MAGICIAN SPACE 魔金石空间

+86 10 59789635  
magician.space  
info@magician-space.com  
798 Art Zone Beijing