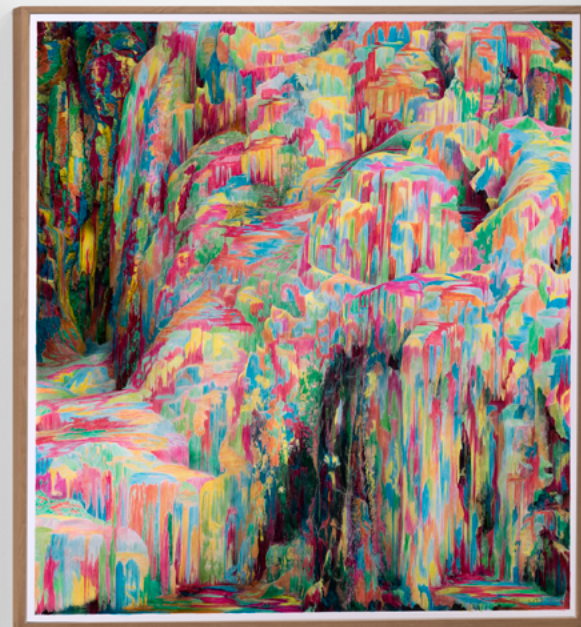


Shi Guowei
2021-2023



Shi Guowei: 2021-2023

Shi Guowei's recent creations on uninhabited scenes stem from his re-evaluation of local reality upon returning to China. Prior to this, he explored a collection of portraits that imitated Western classics with Chinese elements. Later, he realized that the richness of reality far exceeds cultural representation.

The uninhabited scenes mark an important turning point for Shi Guowei: with the absence of cultural features, these scenarios paradoxically detached from characteristic ideologies, accommodating the ambiguities of reality. Concurrently, the shift also makes Shi's method of hand-coloring black-and-white photographs less constrained by subject matter. Here, color breaks away from reality and becomes the artist's psychological reaction to the objective image.

In this exhibition, Shi further adapts the traditional photo-coloring process into a two-tiered structure, partitioning the world into two layers: reality and perception. Within this world layer, the artist endeavors to disrupt the objectivity of reality by manipulating stones into flesh, woods into heterogeneous spaces, and icefall into digital forms. Shi Guowei names these unreal phenomena that descend upon reality as events: sensory actions that re-initiate emotions based on images. By this, he intends to interrupt the logic of reality with a configuration of color layers.

While Shi Guowei makes subjective alterations to objective images, it is not a creation out of nothing as painting. His process lives in an intermediate state: utilizing images coded through optics as his foundation and re-coding them on the colored layer with transparency. In this way, Shi illustrates that manipulation is occurring right before our eyes. Despite the images being always visible, entirely different interpretations could be fabricated by a mere reconstruction of the object's textures using color layers from the reality. In other words, this is a two-tiered structure akin to an encoder that translates the dynamic relationship between reality and perception, splitting new images from the dogmatic reality. For Shi Guowei, this represents an authentic illusion. Yet the real power of this structure is that it exposes another definition of transparency:

Transparency. As a concept, its visibility generates trust, circulation, and standards that sustain contemporary society. However, through his practice, Shi points out that transparency does not serve as a guarantee of truth. Instead, it is a channel through which manipulation leads to the reality.

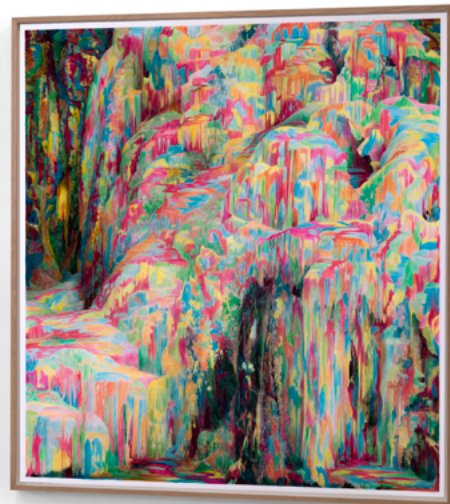
Shi Guowei (1977, Luoyang, Henan) currently lives and works in Beijing. He graduated with a bachelor's degree in photography from the Department of Visual Communication at the Tsinghua University Academy of Arts & Design (the former Central Academy of Art and Design) in 2002, and he received his master's degree in photography from the Fachhochschule Dortmund in 2006.

Shi Guowei further adapts the traditional photo-coloring process into a two-tiered structure, which means his process is neither capturing the fact as photography nor a creation out of nothing as painting. By re-coding the objectivity of original image with the colored layer with transparency, his work partitions the world into two layers: reality and perception. In this way, the artist attempts to negate the unique interpretation of a past fact, and illustrate manipulation is occurring right before our eyes. Despite the images as established facts are always visible, entirely different facts could be fabricated by a mere reconstruction of the object's textures using color layers. Shi Guowei names these unreal phenomena that descend upon reality as authentic illusion: sensory actions that re-initiate emotions based on each image. By this, he intends to interrupt the logic of reality with a configuration of color layers.

Shi Guowei's solo exhibition include: The Drawn Out Moment, Shanghai Center of Photography (SCoP), Shanghai, China (2021); A Walk in the Woods, Magician Space, Beijing, China (2019); Crossing Four Girls

Mountain, Magician Space, Beijing, China (2016).

Selected group exhibition: SIGG : Chinese Contemporary Art from the Sigg Collection, SONGEUN Art Space, Seoul (2023); The First Beijing Biennial, National Base for International Cultural Trade, Beijing (2022); ReBirth- Encounter with Nature, Choi Center, Cloud House, Beijing (2022); Exuberance is Beauty, Song Art, Beijing (2021); The Curation Workshop II: Story and Structure, OCT Art&Design Galler, Shenzhen (2020); Among the Trees, Hayward Gallery, London (2020); Chinese Whispers: Recent Art from the Sigg Collection, MAK Museum Vienna, Vienna (2019); Changjiang International Photography and Video Biennale, Chongqing (2017); Nature: A Subjective Place, Shanghai Center of Photography (SCoP), Shanghai (2016); Don't Shoot The Painter, Galleriad' Arte Moderna Milano (2015); The Civil Power, Minsheng Art Museum, Beijing (2015); The Bright Eye of the Universe, Sundaram Tagore Gallery, New York (2015); Made in China, London (2013); The 6th Chengdu Biennale, Chengdu (2013); Pop Sensation from the UBS Art Collection, Hong Kong Arts Centre, Hong Kong (2012); China: Memories & Imagination, Albemarle Gallery, London (2011); Dimplom-Arbeiten Dortmund Photography Exhibition, Germany (2006).





L:
Icefall 01
2022
C-print, color ink
160 x 150 cm



R:
Icefall 02
2022
C-print, color ink
160 x 150 cm

Icefall 01
Detail



MAGICIAN SPACE

魔金石空间

Icefall 02
Detail



MAGICIAN SPACE

魔金石空间

Flowing Sunset
2023
C-print, color ink
130 x 177 cm



MAGICIAN SPACE

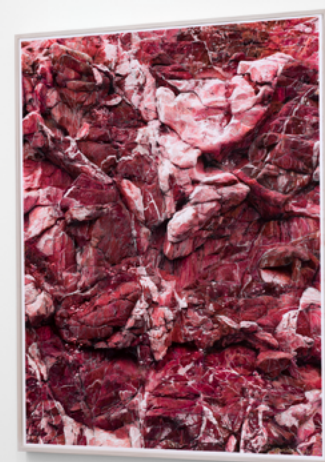
魔金石空间



Mountain Massif
2022
C-print, color ink
150 x 201 cm

MAGICIAN SPACE

魔金石空间



Exhibition View



Flesh Cliff
2021
C-print, color ink
184 x 154cm



Wool
2021
C-print, color ink
180 x 198cm





L:
Wall 2022
2022
Painting on photograph
150 x 150 cm

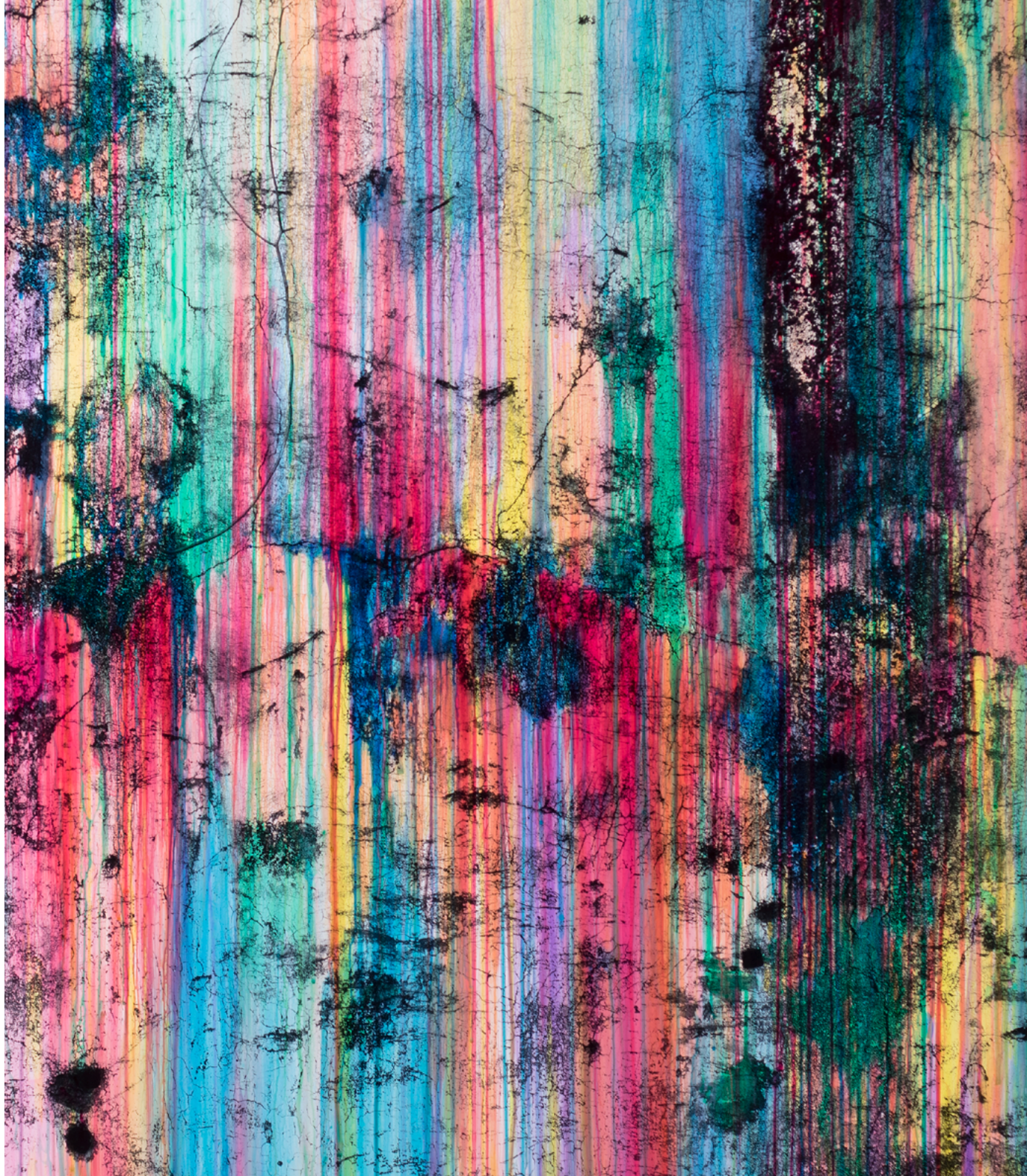


R:
Wall 2023
2023
C-print, color ink
150 x 154 cm

MAGICIAN SPACE

魔金石空间

Wall 2023
Detail



MAGICIAN SPACE

魔金石空间

Wall 2022
Detail



MAGICIAN SPACE

魔金石空间



Purple
2021
C-print, color ink
154 x 205cm

MAGICIAN SPACE

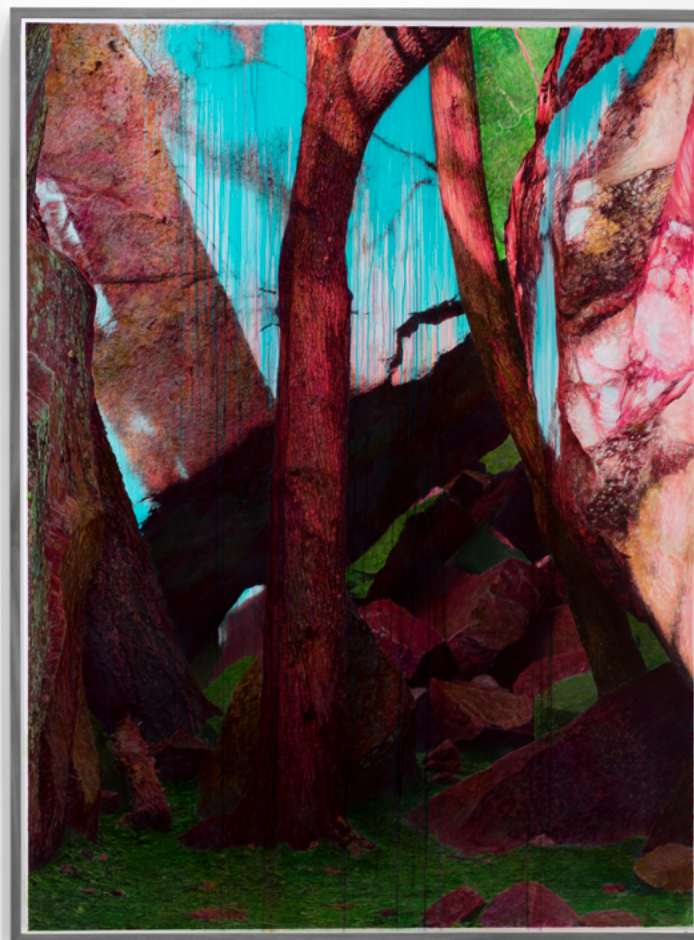
魔金石空间



Exhibition View



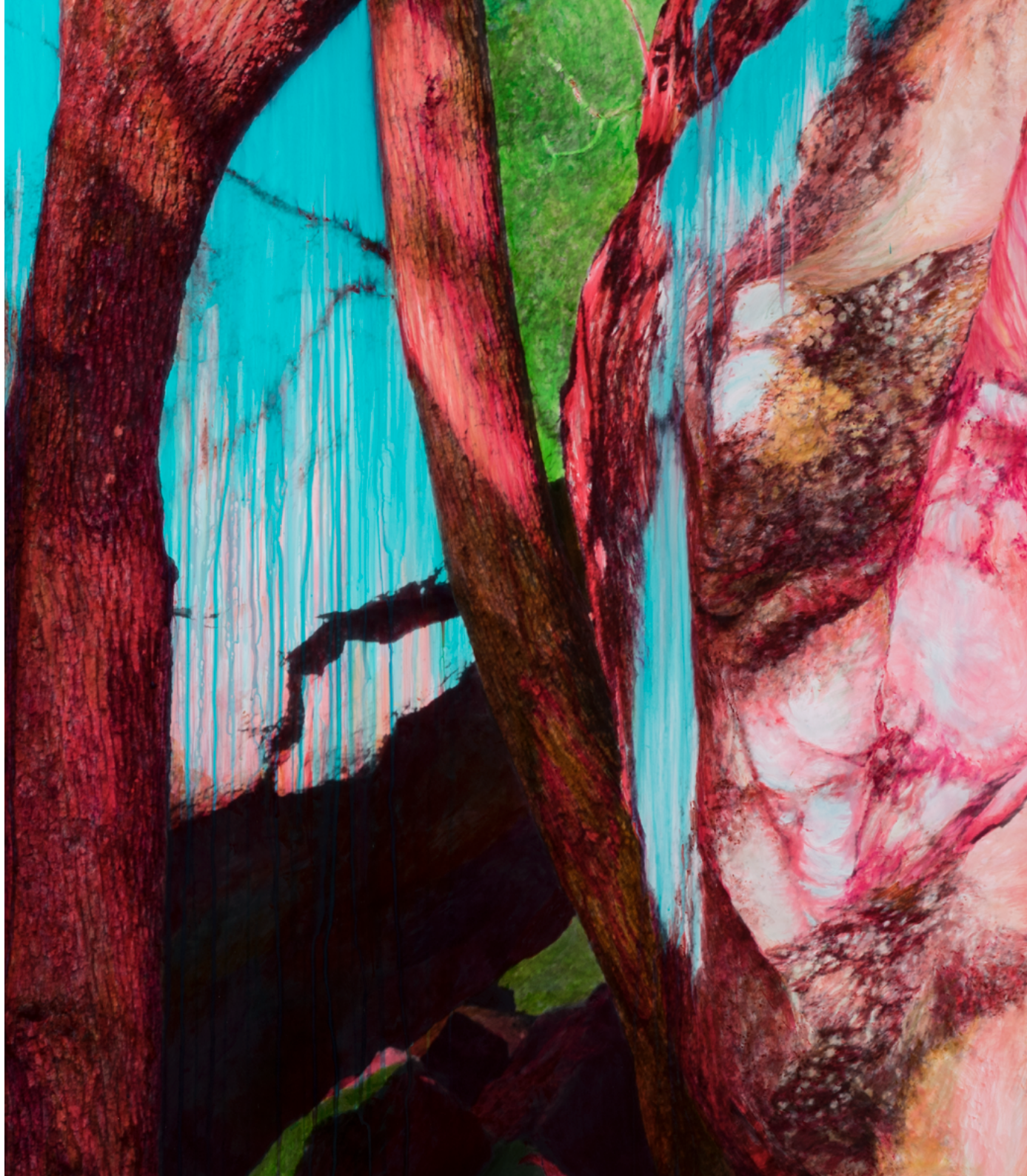
L:
Scene B
2023
C-print, color ink
130 x 171 cm



R:
Scene A
2023
C-print, color ink
130 x 171 cm

MAGICIAN SPACE

魔金石空间



Scene A
Detail

MAGICIAN SPACE

魔金石空间



Scene B
Detail

MAGICIAN SPACE

魔金石空间

Archaeology A
2023

Blueline reproduction and oil paint on linen
230 x 196 cm



Shi Guowei's CV

Shi Guowei

Currently lives and works in Beijing, China.

- 1977 Born in Luoyang, Henan Province, China
- 2002 Graduated from Photography in Upholster Department, Academy of Arts & Design Tsinghua University (Originally Central Design & Art College)
- 2006 Obtained master's degree in Photography Institute of Dortmund FH University

Solo Exhibitions

- 2023 2021-2023, Magician Space, Beijing, CN
- 2021 The Drawn Out Moment, Shanghai Center of Photography, Shanghai, CN
- 2019 A Walk in the Woods, Magician Space, Beijing, CN
- 2016 Crossing Four Girls Mountain, Magician Space, Beijing, CN
- 2014 Shi Guowei Solo Exhibition, SZ Art Center, Beijing, CN
- 2010 What Year Is It Today, In-Shine Gallery, Beijing, CN
- 2008 Old Stories, Contemporary Retellings, Cetus Gallery, Shanghai, CN

Group Exhibitions

- 2023 SIGG : Chinese Contemporary Art from the Sigg Collection, SONGEUN Art Space, Seoul, Korea
- 2022 2022Beijing Biennial, National Base for International Trade, Beijing, CN
The Trace of Civilization—The Great Art of Dunhuang, Beijing Mingsheng Art Museum, Beijing, CN
Rebirth – Encounter with Nature, Choi Center · Cloud House, Beijing, CN

9th Annual Photography Rankings of China, Photography Museum of Lishui, Zhejiang, CN

- 2021 Exuberance is Beauty, Song Art, Beijing, CN
- 2020 The Curation Workshop II: Story and Structure, OCT Art&Design Galler, Shenzhen, CN
Theme Exhibition of the 6th Anniversary of 33 Contemporary Art Center, 33 Contemporary Art Center, Guangzhou, Guangdong, CN
Among the Trees, Hayward Gallery, London, UK
- 2019 Beijing Contemporary Art Expo 2019, Beijing, CN
Art Basel Hong Kong, Hong Kong, CN
Chinese Whispers: Recent Art from the Sigg Collection, MAK Museum Vienna, Vienna, AT
Turning Point, NGV, Melbourne, AU
- 2018 Art Basel Hong Kong, Hong Kong, CN
- 2017 Rip It Up!: 2nd Changjiang Internatinal Photography and Video Biennale, Chongqing Changjiang Musuem of Contemporary Art, Chongqing, CN
West Bund Art & Design Fair, Shanghai, CN
Hong Kong Art Basel, Hong Kong, CN
- 2016 Nature: A Subjective Place, Shanghai Center of Photography (SCôP), Shanghai
- 2015 Don't Shoot the Painter, Paintings from the UBS Art Collection, Galleriad' Arte Moderna Milano, IT
The Bright Eye of the Universe, Sundaram Tagore Gallery, New York, US
The Civil Power, Minsheng Art Museum, Beijing, CN
Silent Poetry-Chinese Contemporary Youth Art Exhibition, China Cultural Centre in Sydney & Adelaide Festival Centre, AU
- 2014 Art Basel Hong Kong UBS VIP Art collection, Hong Kong, CN

MAGICIAN SPACE 魔金石空间

- 2013 The 6th Chengdu Biennale, Chengdu, CN
Made in China, London, UK
Art Macau, Macau, CN
- 2012 Pop Sensation from the UBS Art Collection, Hong Kong Arts Centre, Hong Kong, CN
- 2011 China: Memories & Imagination, Albemarle Gallery, London, UK
Art Nova 100 Project: Art Nova 100 Organizing Committee, Beijing's Ditan Park, Beijing
Micro-Life, Soka Art Center, Beijing, CN
Asian Art Festival: Chongqing Young Artist Biennale, Chongqing, CN
Micro-Life Tour, Soka Art Center, Taiwan
- 2010 Art Beijing: Photography Beijing, Beijing, CN
- 2008 Art Beijing: Photography Beijing, Beijing, CN
- 2007 Dressing: Photography Exhibition, Cetus Gallery, Shanghai, CN
Art Beijing, Photography Beijing, Beijing, CN
- 2006 Dimplom-Arbeiten Dortmund Photography Exhibition, GER

+86 10 59789635
magician.space
info@magician-space.com