

2021.07.03 - 08.14

麻剑锋

不可调和

Ma Jianfeng
Irreconcilable

策展人
陈立

Curator
Leo Li Chen

MAGICIAN SPACE

魔金石空间

Ma Jianfeng: Irreconcilable July 03 to August 14, 2021

Magician Space is delighted to present Ma Jianfeng's solo exhibition, Irreconcilable. Painted primarily on inexpensive material or readymade objects, including cardboard, wooden board, tarp, hemp. Ma Jianfeng's practice expands from the surface to the physical space, where temporary materials constitute the vehicle of his painting. It is a way in which the artist explores this medium while overcoming the setbacks of two-dimensional. Ma Jianfeng paints and visualizes ideas and moods into different spatial dimensions, presenting the order and conflict between the internal and external ways of looking.

Ma Jianfeng's paintings embody the linguistic styles of Neo-Expressionism, where the notions of abstraction, figuration, composition, and visual perspectives are not drawn from knowledge but from his experiences in working with various spatial dimensions and materials. Ma Jianfeng tempers the relationship between the painting surface and the three-dimensional like all translations of fiction and reality. Materials, actions, display, and way of seeing determine the co-existing qualities of openness and transience of Ma Jianfeng's works. Ma's work translates between various structural states if the medium of painting pursues a form of consistency. They cannot be perceived instantly – this is a rebellion against the gaze. Drawing and painting are being constantly deconstructed, reassembled, compressed, forming new orders at the limit of the visual threshold.

About the Artist

Ma Jianfeng was born in Zhejiang in 1983, graduated from the Department of Mural Painting at China Academy of Art in 2007. He received his Meisterschüler at the University of the Arts Berlin in 2012. Currently he lives and works in Beijing, China.

Ma Jianfeng is adept at creating artworks from scrap materials found in everyday life. By configuring them into shapes, dismantling, reassembling and displaying them, the artist disrupts the order of elements intrinsic to these found materials and images. Displaying his works as painting installations, he creates chaotic and theatrical spaces brimming with ambiguity and vitality.

His major exhibitions include *Ma Jianfeng: Irreconcilable*, Magician Space, Beijing, CN (2021); *Let Painting Talk*, Taikang Space, Beijing, CN (2021); *Being of Evils*, Hive Center for Contemporary Art, Beijing, CN (2020); *Garage Sale*, Sandwich Gallery, Bucharest, RO (2019); *Ghost Island*, I: project space, Beijing, CN (2019); *Ma Jianfeng: Treasure Island*, GAO Gallery, London, UK (2019); Asia Culture Center, Gwangju, KOR (2018); *The U-Cloister*, Institute for Provocation, Beijing, CN (2018); *The New Normal: China, Art and 2017*, UCCA, Beijing, CN (2017); *MA*, Ying Space, Beijing, CN (2016); *Never Arriving*, OCAT Xi'an, Xi'an, CN (2014); *Wall*, Don Gallery, Beijing, CN (2013).







A Chat

2020

acrylic on canvas

112 x 149 cm





Look down at Casa Milà

2021

acrylic on canvas

111.5 x 83.5 cm

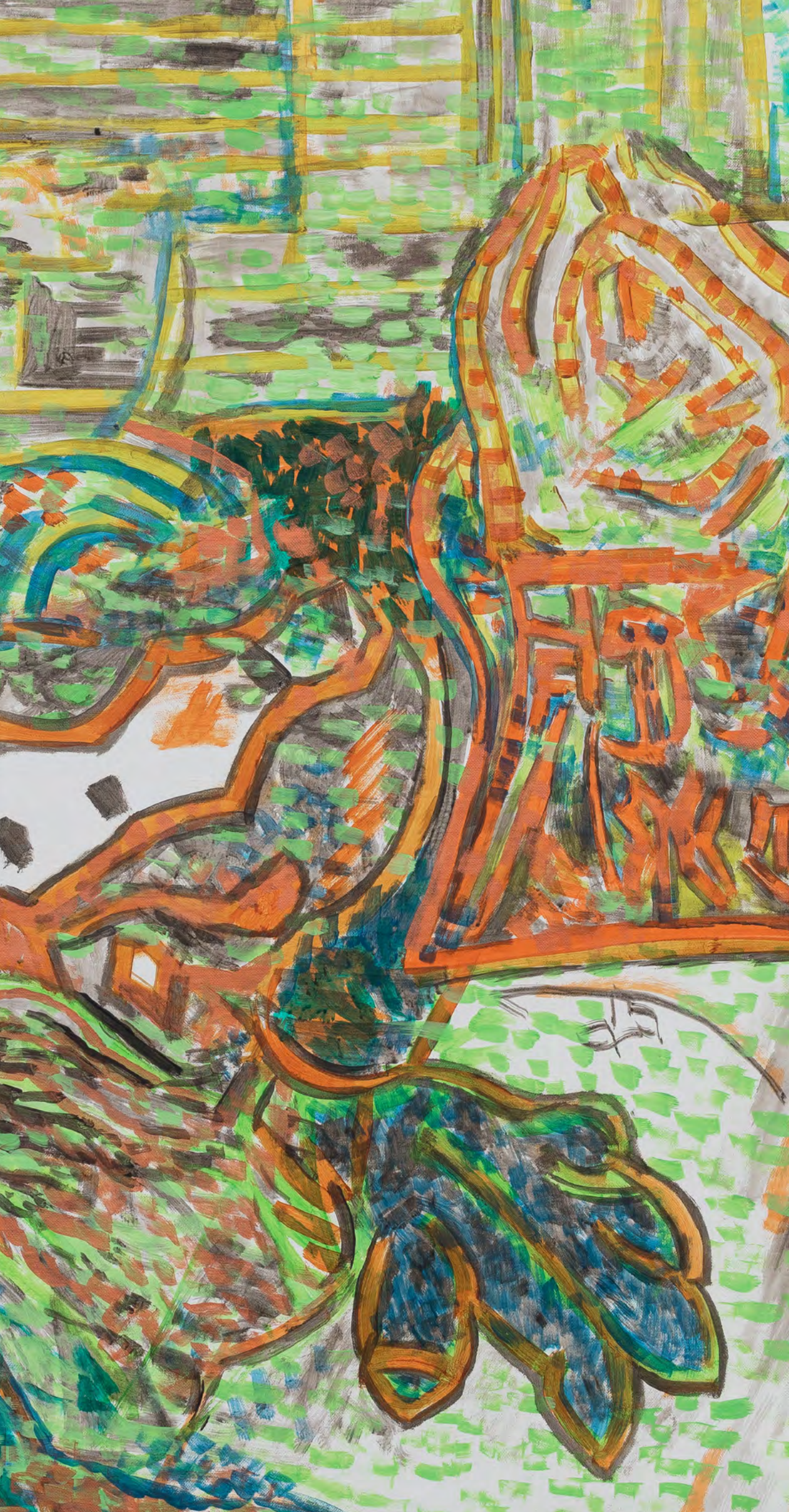


Casa Batlló

2021

acrylic on canvas

108.5 x 84 cm





Roundabout (Return)

2021

acrylic on canvas

73 x 171 cm



B&W Movie

2021

acrylic on canvas

73.5 x 171 cm





Party

2019

acrylic on canvas

70 x 131.5 cm







The South Pole
2021
acrylic on canvas
103 x 170.5 cm





Squares - Carb

2020

cardboard, acrylic, spray paint

triptych 116.5 x 99 cm

each 116.5 x 33 cm





Squares - Analysis

2021

cardboard, acrylic, spray paint, photograph

66 x 116.5 cm



Scenery - Roman Column No.1
2018-2020
cardboard, acrylic, oil paint, masking tapes, nails
triptych 236 x 90 x 59 cm



Afternoon

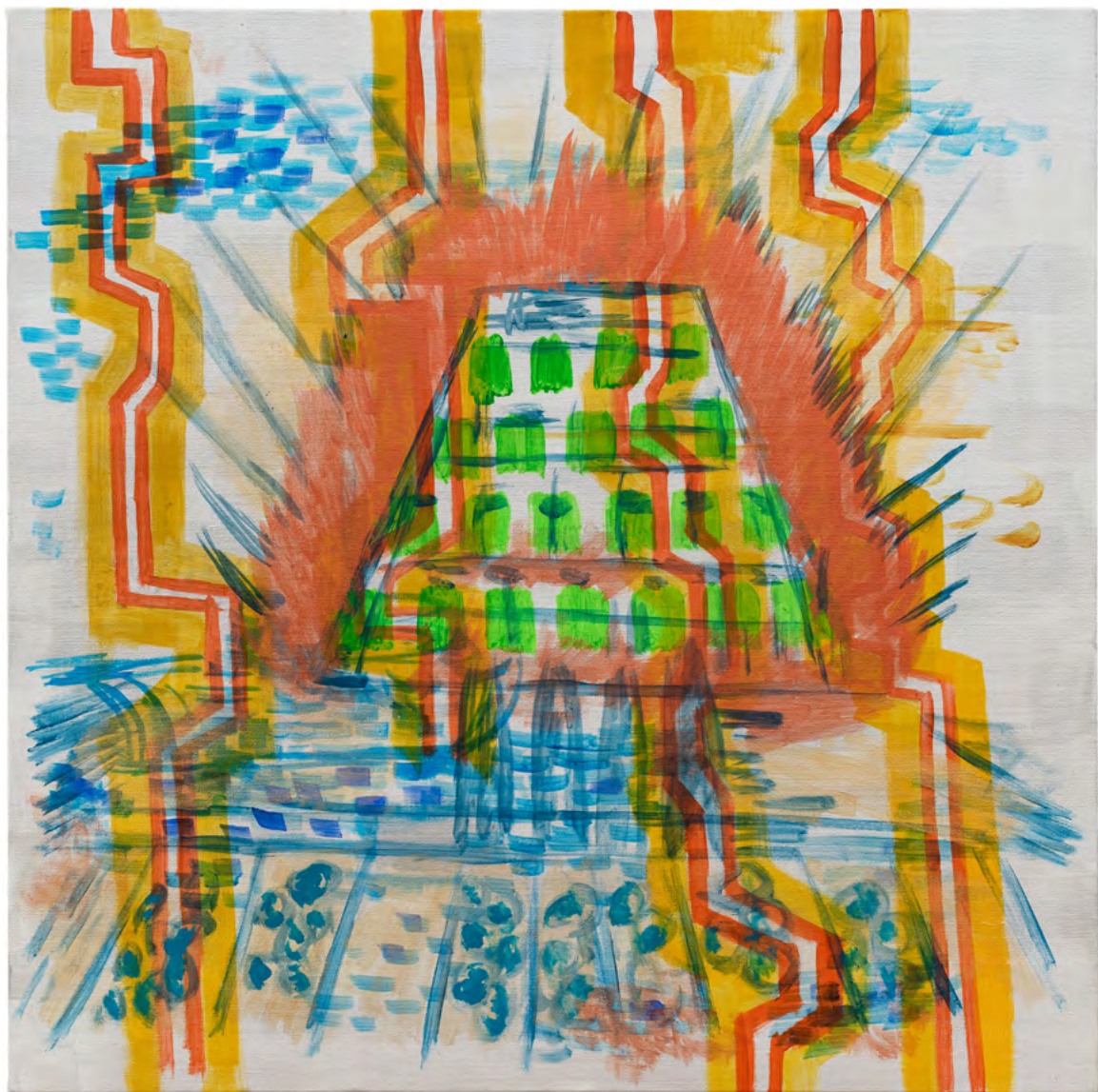
2020

acrylic on canvas

149 x 112 cm







Expo

2021

acrylic on canvas

58 x 58 cm



Talking Man

2019

cardboard, acrylic, spray paint

triptych 116.5 x 66 cm

each 116.5 x 33 cm

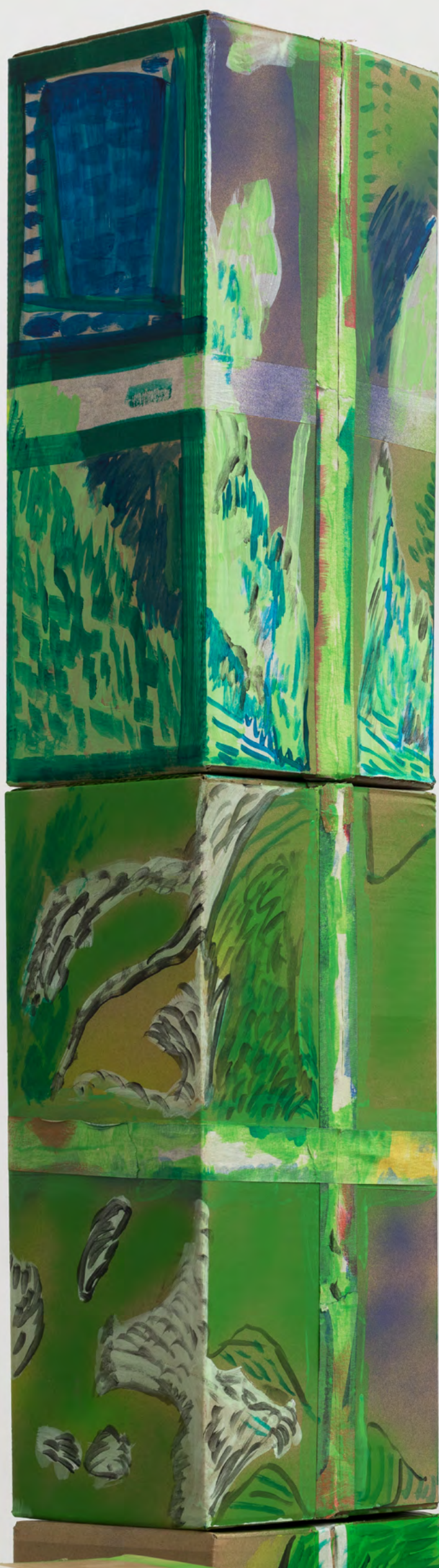




Diamonds - Landscape (front)
2019-2020
cardboard, acrylic, spray paint
dimensions variable



Diamonds - Landscape
(back)



Diamonds - Landscape
(detail)









Treasure Island Series 2, 3, 4, 5
2019
cardboard, acrylic, masking tapes
left to right: 100 x 60 cm, 100 x 59.5 cm,
100 x 57 cm, 100 x 60 cm



Treasure Island Series 1

2019

cardboard, acrylic, masking tapes

193.5 x 65 cm





Cycle Series - Landscape No.2

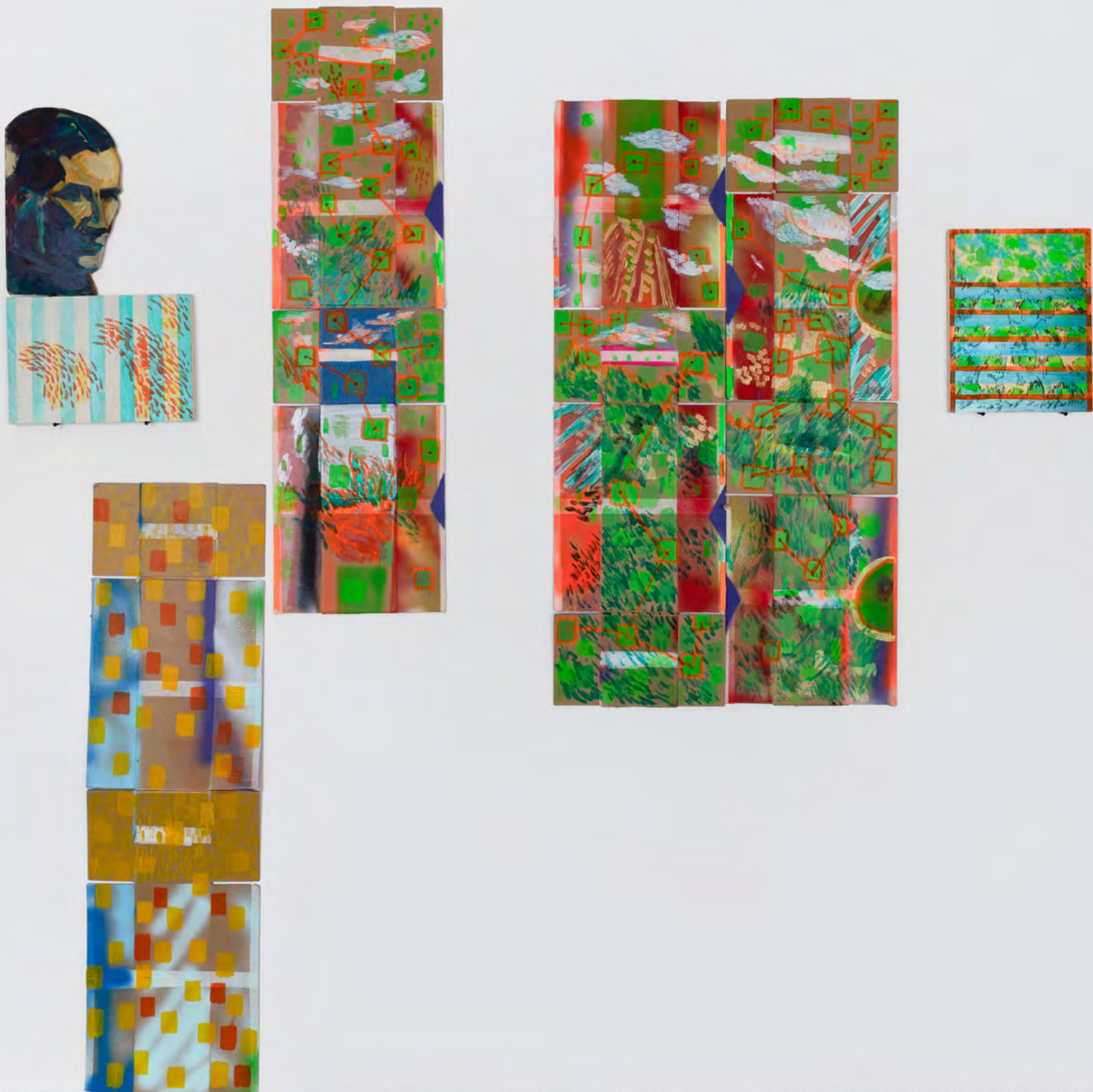
2019

acrylic, cardboard, spray paint,
masking tapes

80.5 x 18 x 33 cm







1934
2016-2021
oil painting on cardboard, acrylic
on board
top: 36 x 22 cm
bottom: 24.2 x 35 cm

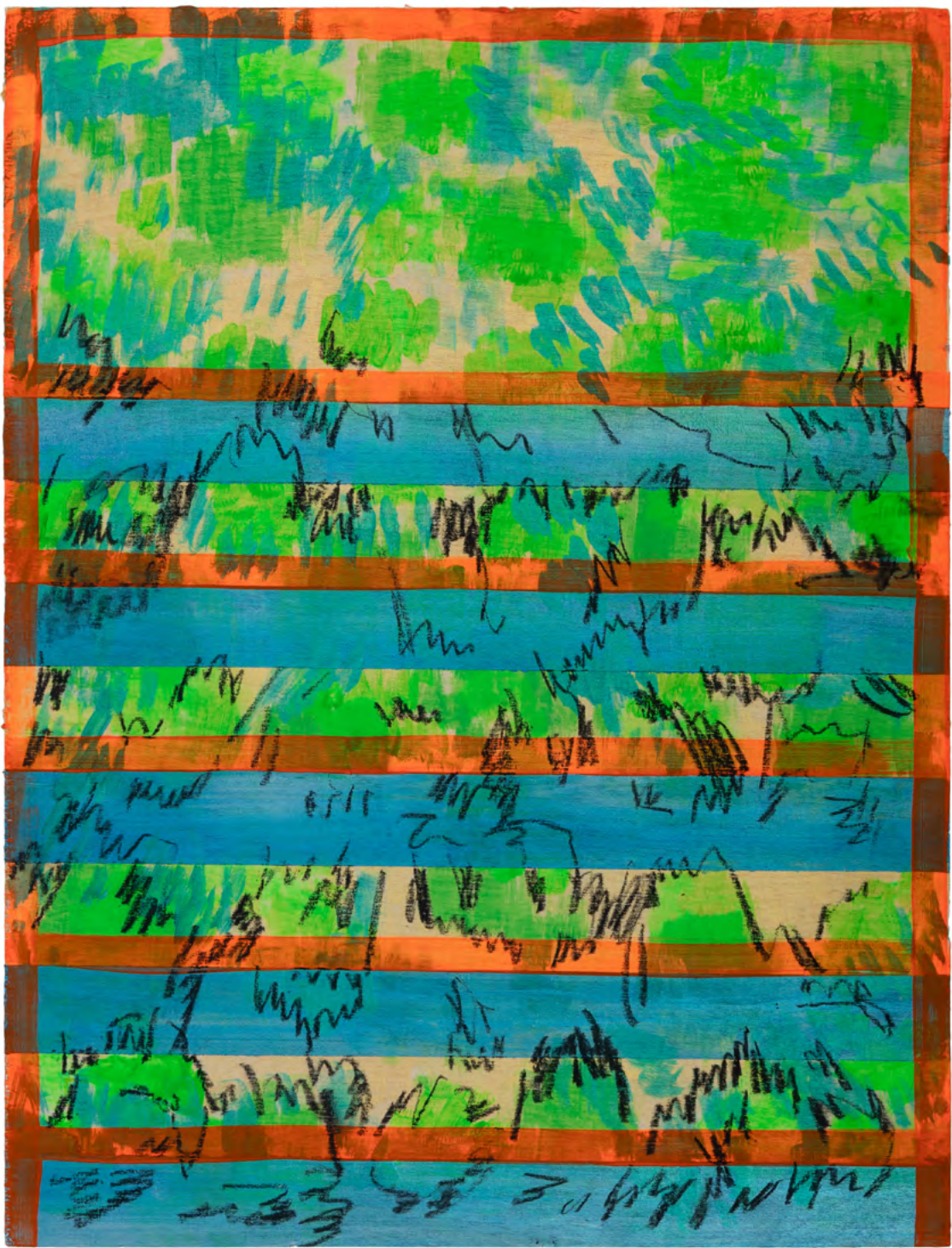


Greenbelt Series - No. 1

2021

cardboard, acrylic, spray paint,
masking tapes

166.5 x 33cm *3



Greenbelt Series - No.2

2021

board, acrylic, crayon

35 x 27 cm

Scenery - Roman Column No.2

2019-2020

cardboard, acrylic, oil paint,

masking tapes, nails

triptych 215 x 130 x 60 cm





Diamonds - Pearls (front)

2018-2020

MDF, acrylic, spray paint

241.3 x 122.3 cm



Diamonds - Pearls (back)





Diamonds - Cattle's Head (front)

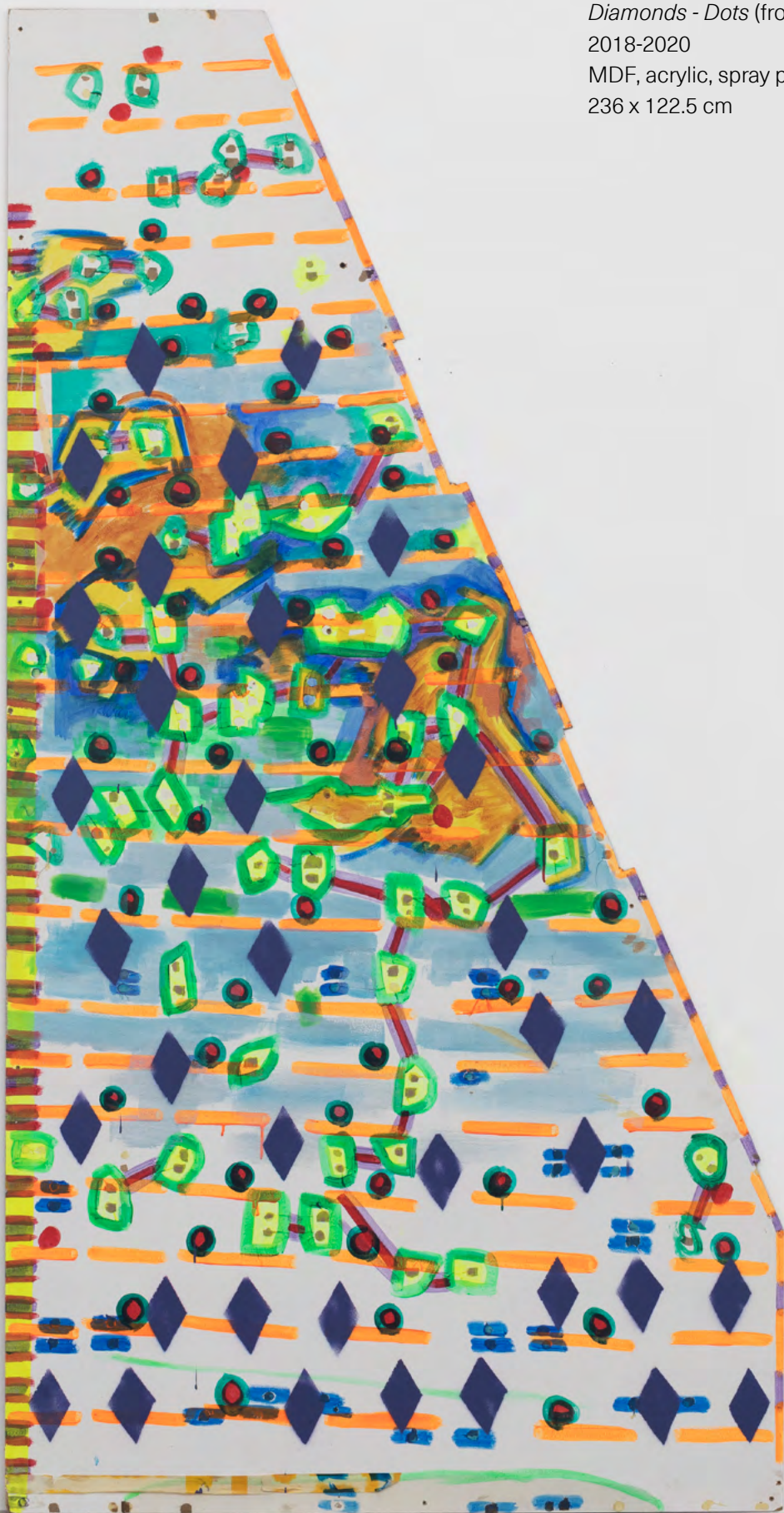
2018-2020

MDF, acrylic, spray paint

236 x 122.5 cm

Diamonds - Cattle's Head
(back)





Diamonds - Dots (front)
2018-2020
MDF, acrylic, spray paint
236 x 122.5 cm

Diamonds - Dots
(back)



Diamonds - Squares (front)

2018-2020

MDF, acrylic, spray paint

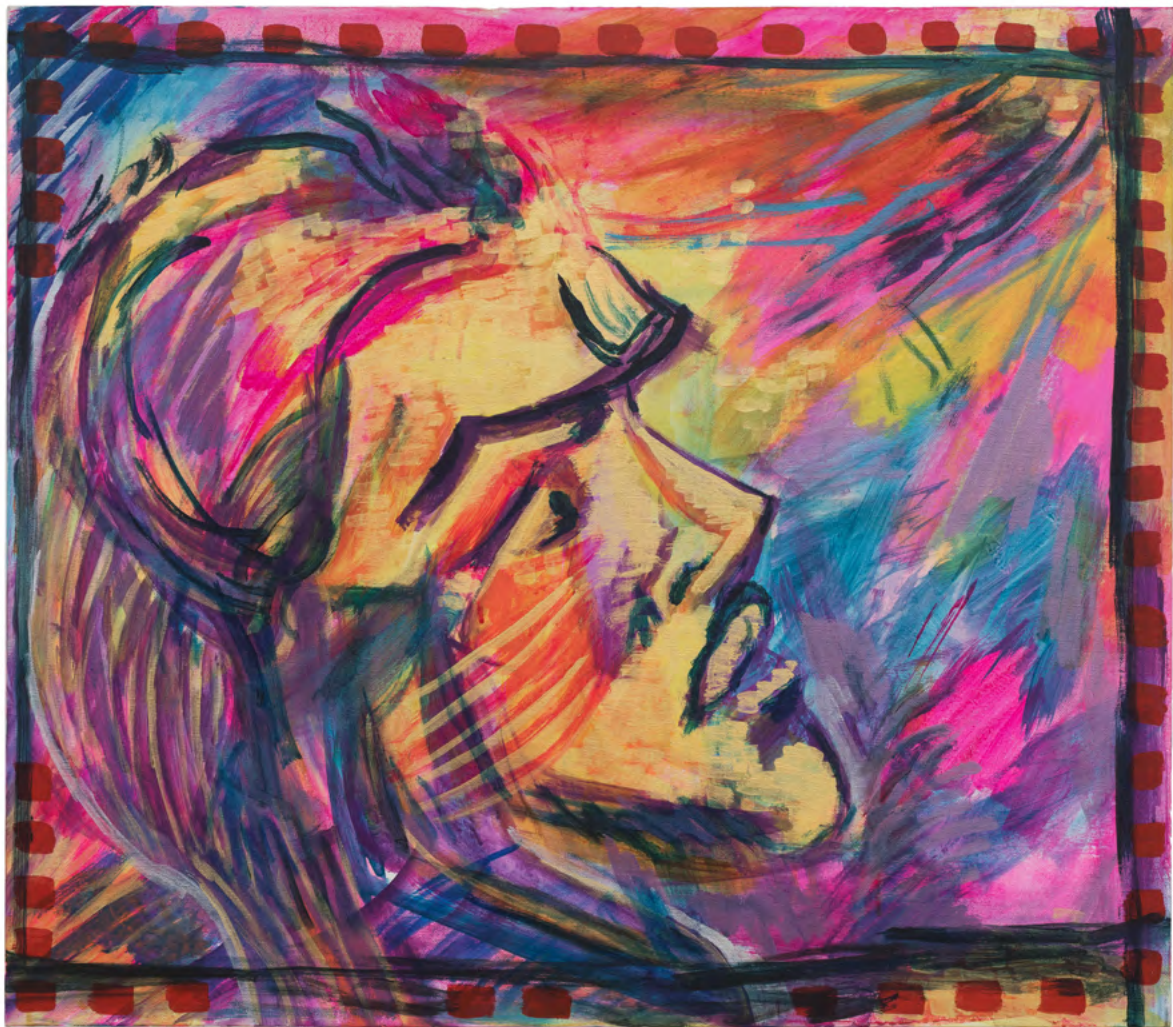
241.3 x 122.3 cm



Diamonds - Squares
(back)







Mask

2020

acrylic on canvas

70 x 80 cm





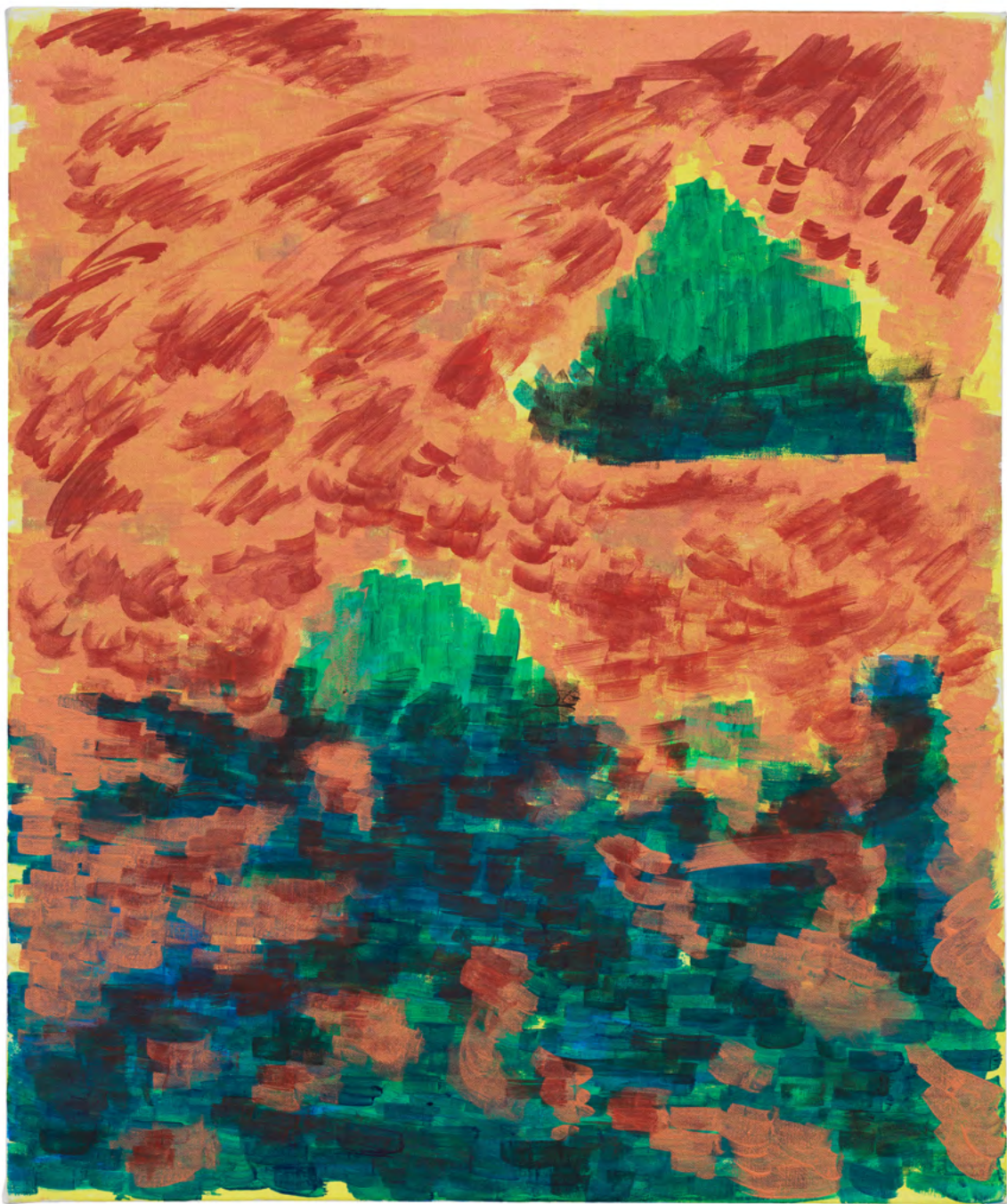
Casa Milà

2021

acrylic on canvas

58 x 58 cm





Lonely Island

2021

acrylic on canvas

60 x 50 cm

+86 10 59789635
magician.space.com
info@magician-space.com
北京 798 艺术区